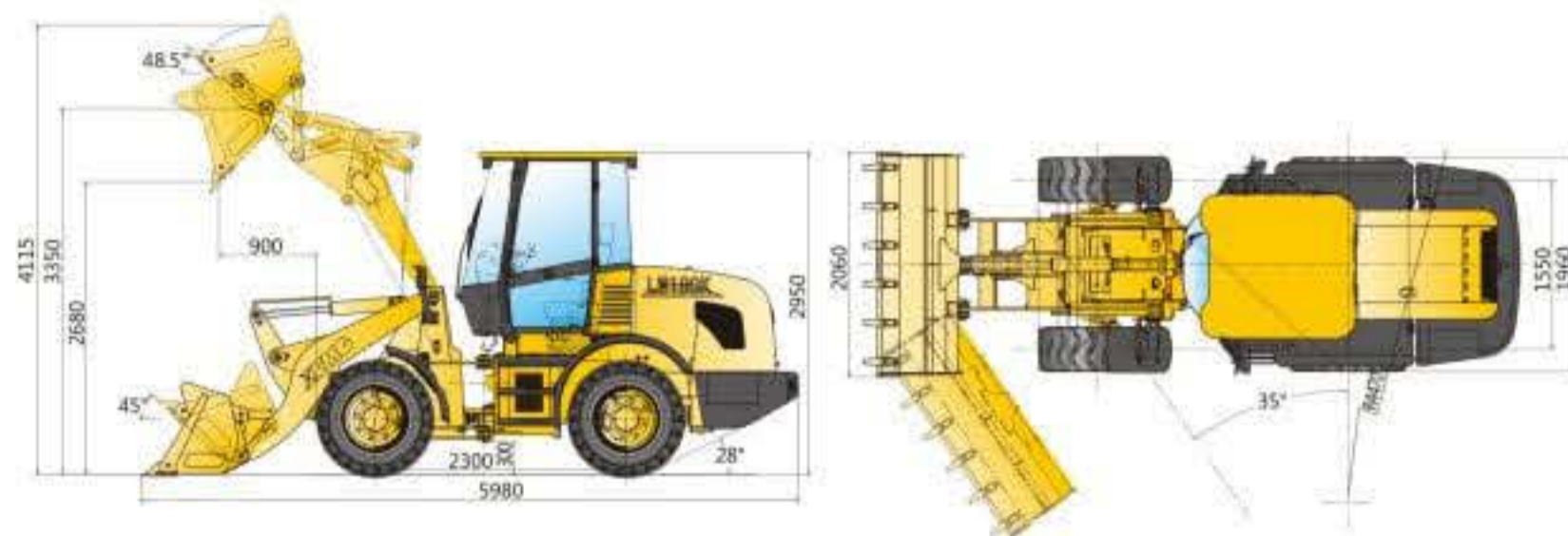


## Outline Dimensions



## Main Specifications

Description	Specification	Unit
Rated operating load	1800	kg
Bucket capacity	0.9~1.1	m <sup>3</sup>
Machine weight	6200	kg
Dump clearance at maximum lift	2650~2970	mm
Reach at maximum lift	900~1000	mm
Wheel base	2300	mm
Tread	1550	mm
Max.breakout force	≥58	kN
Hydraulic cycle time-raise	5	s
Total hydraulic cycle time	≤8.5	s
Min. turning radius over tyres	4470	mm
Articulation angle	35	°
Gradeability	28	°
Tyre size	16/70-20	
Overall machine dimension L×W×H	5980×2060×2950	mm
Model	YC4D80-T20	
Rated Power/Speed	58/2400	kW/rpm
Travel Speed	I-gear(F/R)	0~9/0~9
	II-gear(F/R)	0~26/0~26

No further information of sample contents, product structure and configuration parameters updates.  
There maybe some difference between sample books and material objects.Please kind prevail.

# LW180K

## WHEEL LOADER



### Description

Description	Specification
Rated operating load	1800kg
Bucket capacity	0.9-1.1m <sup>3</sup>
Operating weight	6200±200kg
Maximum breakout force	58kN
Maximum traction force	42kN



# LW180K

Supreme quality and industry benchmark

Heavy-duty, high reliability, and energy-conservation

## Heavy-duty · High-end Supreme quality and industry benchmark

### Model Characteristics

- XCMG's unique heavy-duty drive and structural parts boast high carrying capacity.
- The all-new optimized working device challenges the efficiency limit of small-sized loaders.
- The streamline exterior, large-view glasses, and arc ballast feature beautiful modeling and are in line with international mainstream level.
- The human-oriented design guarantees safety, reduces the fatigue, and builds an excellent operating environment for you.
- The optional hydraulic pilot control, FOPS/ROPS cab, A/C, and audio system feature comfortable operations and high driving safety.

### Performance Highlights

- The extended wheelbase (2,300mm) design applied adapts to diversified super-heavy working conditions, with the stability leading the industry.
- With powerful digging force (The breakout force of LW180K is  $\geq 58\text{kN}$ ) and strong breaking force, it handles diversified materials with ease.
- It boasts the industry's best traveling speed (26km/h), featuring high rapidness and efficiency.
- The diversified dumping heights (at 2,650~2,970mm) are at choice to meet the operation needs in diversified applications.



## Excellent quality power and drive systems

### Strong power

- The engineering version leading Yuchai engine for small-sized loaders features China-II emission compliance.
- With strong power and high torque reserve factor, this engine meets the instant overload demand during operations and sufficiently provides the power required for heavy-load operations.



### XCMG self-made transmission and special torque converter

- The special high capacity torque converter ensures the maximum utilization of engine power.
- The enhanced design and large modulus gears effectively improve the overload capacity of the transmission.
- The countershaft transmission features high reliability and efficiency and convenient maintenances.

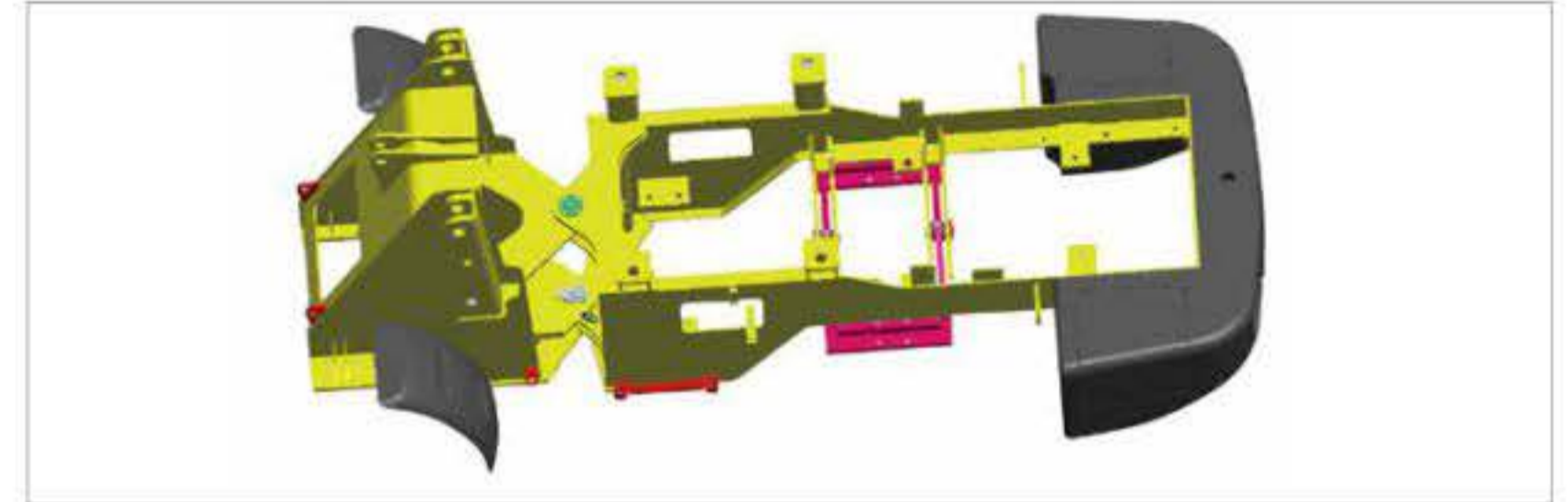


### Enhanced heavy-duty drive axle of outstanding performances

- The solid and firm load carrying portions, integral ring gears, and large modulus gears boast excellent overload resistance to meet the needs of diversified high strength and high load operations.
- The fatigue life test of >820,000 cycles completely meets the needs of heavy-duty operations.



## Firm and reliable super-strong heavy-duty structural parts.



- The heavy-duty design, thick plate structure, and robot welding process ensure high torsion resistance coefficient and strong overload capacity.
- The finite element analysis technology is applied to reduce the stress concentration and eliminate the partial weaknesses so that the frame is resistant against impact and overload and handles with ease all kinds of super-heavy-load conditions.
- The approximate centering design for main hinge joints reduces the turning radius and lowers the tire wear and energy consumption.

## International quality hydraulic and electric units

- All hydraulic parts adopt domestic leading brand products.
- The harnesses are made of high quality material and the process layout is optimized to ensure reliable electric circuit system.
- The international quality hydraulic hoses applied feature high heat and pressure resistance and long service life.

- The hydraulic pipelines adopt double sealing means (DIN standard 24° taper thread + O-ring) to achieve better sealing performance and effectively solve the leakage problem.

