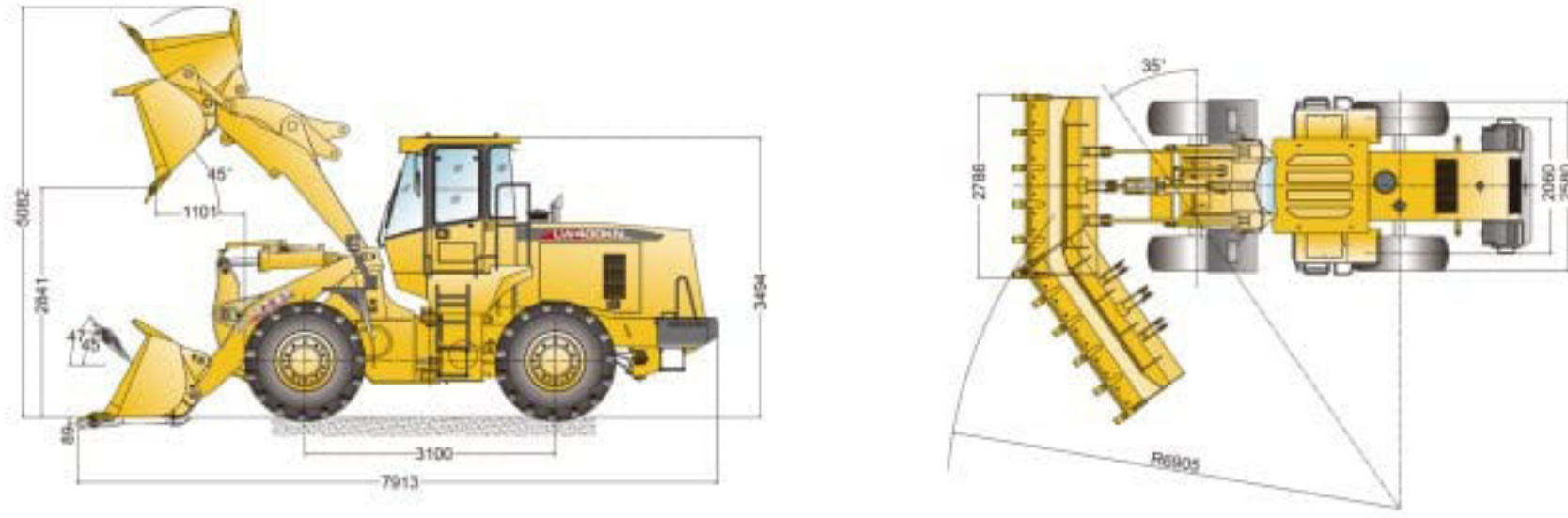


Outline Dimensions



Main Specifications

Description	Specifications	Unit
Rated bucket capacity	2.4	m ³
Rated loading weight	4000	kg
Operating weight	14500±200	kg
Max.traction force	123+5	kN
Max.break-out force	120+5	kN
Min.turn radius	5940+50	mm
Boom lifting time	5.5	s
Total cycling time	10.5	s
Tipping load	8300	kg
Model	SC80D	
Rated power	125	kW
Rated speed	2200	r/min
I-gear(F)	0-11	km/h
II-gear(F)	0-35	km/h
I-gear(R)	0-15	km/h

Structure and specification are subject to change without notice. In case there is any difference between the description of the machine and the substantial machine, the substantial machine should govern.

LW400KN

WHEEL LOADER

Dedicated to serve high-end heavy-duty applications



Description Specification

Rated bucket capacity	2.4m ³
Rated loading capacity	4000kg
Rated power	125kW
Operating weight	14500+200kg
Max.break-out force	130+5kN

 **BUY XCMG**

LW400KN

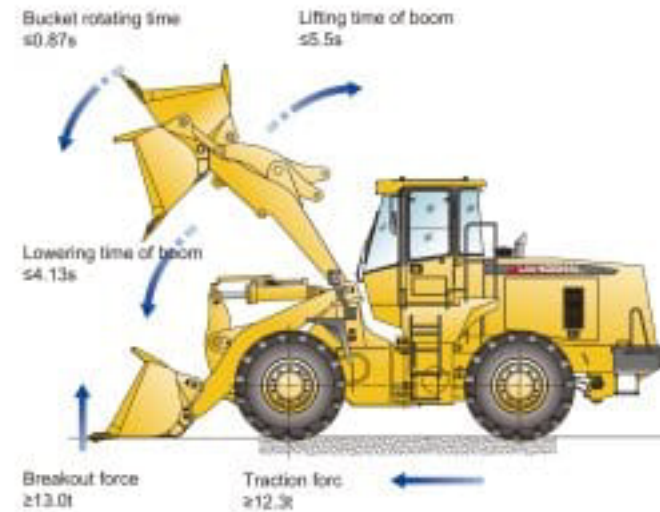
Product Overview

- ◆ F series loader is the latest series product built elaborately by XCMG with the decades of professional experiences.
- ◆ Comprehensive upgrades of working performance, working efficiency, structural strength, service life, daily maintenances, and driving conditions.
- ◆ With exclusively revolutionary breakthroughs in drive parts and covering parts, this product is intrinsically far leading the industry like products.
- ◆ The whole series product adopts the super-strong structural design to achieve super-strong power performance, especially for super-heavy-duty working conditions.
- ◆ With the largest machine weight, super-long machine body, and super-strong power performance and efficiency, LW400KN is leading the like products. The working performance of this machine is closing to that of a 5t product.

Performance Characteristics

Outstanding performance

- High power performance: The 12t industry-leading powerful bucket breakout force guarantees outstanding adaptability under diversified severe working conditions.
- High working stability: 3,100mm extended wheelbase, 7,978mm extended machine body, and rear-mounted diesel tank ensure excellent working stability of the machine.
- High loading capacity: The standard bucket of up to 2.4m³ capacity is leading the industry like products.
- Fast motions: The total cycle time is only 10.5s, leading the industry.
- Flexible steering: The centering design realizes small turning radius and the load-sensing coaxial flow amplifying steering system features high handiness, flexibility, and efficiency.



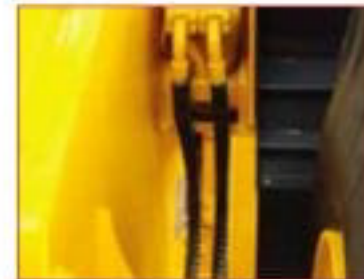
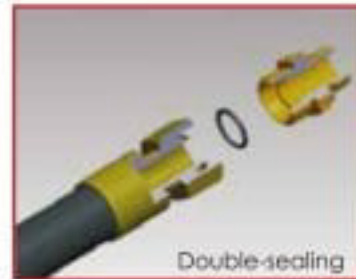
High strength

- Both front and rear frames adopt super-heavy-duty structure design, featuring thick plates and high strength.
- The finite element analysis is applied for the critical structural parts to ensure that such parts can meet the demands of diversified dangerous and heavy-load conditions.
- The gross machine weight is 14.5t that is closing to the specification of a 5t product, featuring high firmness and mightiness.



Long life

- The double-stage dustproof measure is applied for critical hinged joints to ensure low wear and long life.
- The wear-resistant blades and teeth feature longer life.
- The hydraulic pipelines adopt double sealing means (DIN standard 24° taper thread + O-ring) to solve the industry's common leakage problem.
- The easily wearing oil pipes are attached with protective sleeves to prolong their lives.



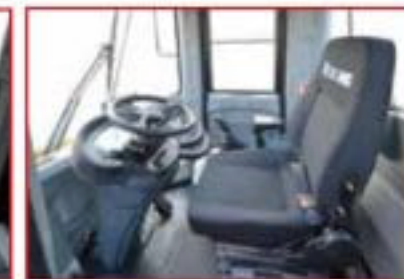
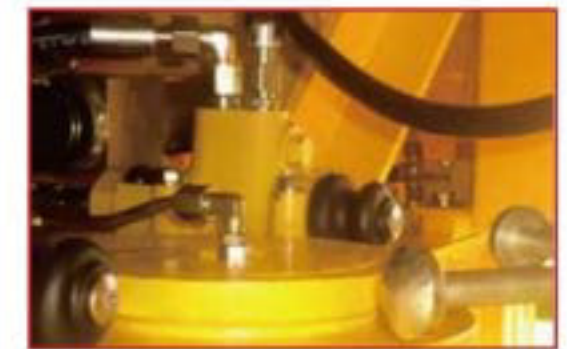
Convenient maintenances

- The engine hood adopts large upturning gate design in large opening angle to ease the maintenances.
- The detail design, including central pressure measurement, partially central lubrication, and central water drainage, brings you with really comfortable operation convenience.
- The fuel suction port adopts the built-in small chamber structure to improve the fuel suction environment.



High driving comfort

- The luxury cab equivalent to the car level is equipped with air conditioning system, featuring large space and broad visual field.
- The longitudinally adjustable injection molded dashboard features high elegance and comfortable operations.
- The pneumatic handbrake is normally closed by spring and opened by air pressure and is controlled by button to ensure excellent handiness and labor-saving.
- LW400KN adopts the automatic leveling technology and the electromagnetic lifting limit technology to achieve simple operations and less impact.



Basic configuration

Grade	LW400KN
	Common configuration
Engine	Shanghai SC8D170G2
Transmission	XCMG self-made 40/50 transmission
Working hydraulic system	Single-joystick hydraulic system
Steering hydraulic system	Load-sensing coaxial flow amplifying
Brake system	With power cutoff option, air-assisted hydraulic caliper single-pedal service brake, spring loaded and air released parking brake, adjustable dashboard, and standard environmental-friendly heating and air conditioning system
Note	Adjustable dashboard and standard environmental-friendly heating and air conditioning system Optional FOPS & ROPS luxury cab

Only the manufacturing excellence can create excellent quality

The world's largest XCMG high-tonnage loader intelligent manufacturing base

